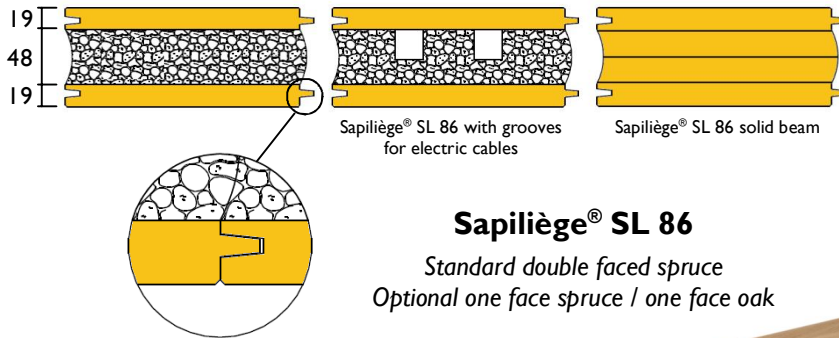


Sapiliège®



The natural insulating solution

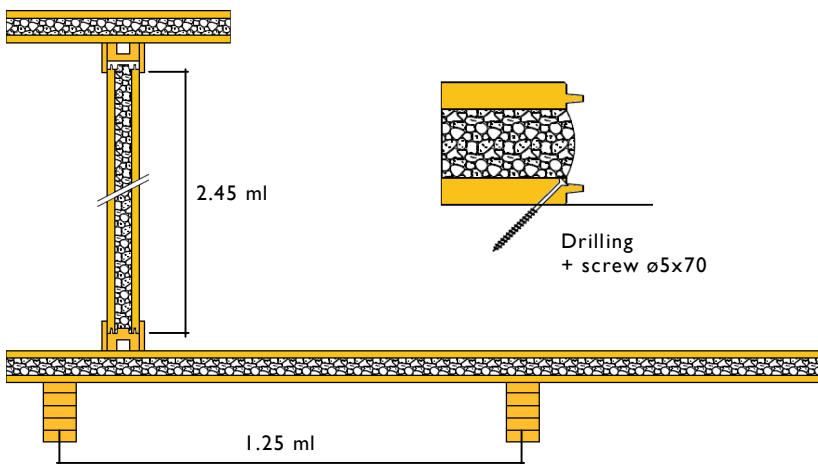
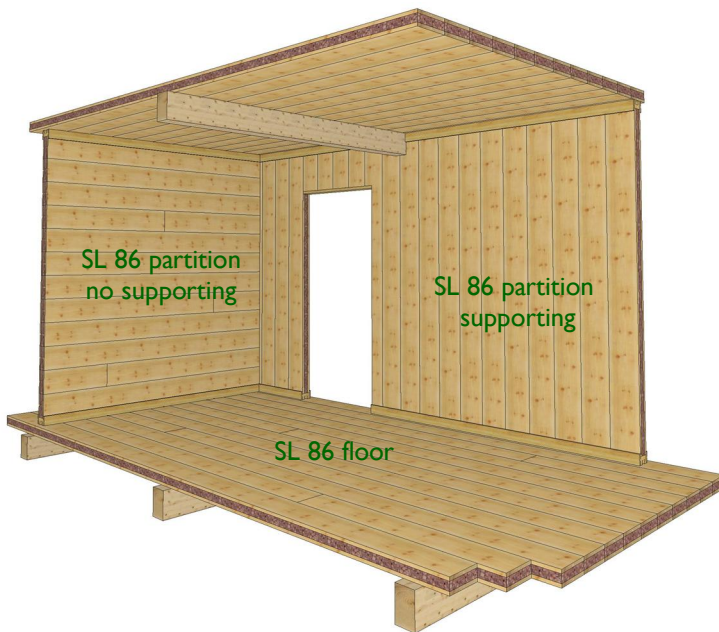
Floor or wall



Sapiliège® SL 86
 Standard double faced spruce
 Optional one face spruce / one face oak

Usable length 2.45 linear meters

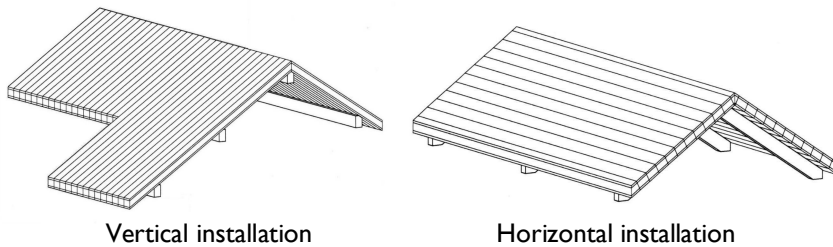
- Installation



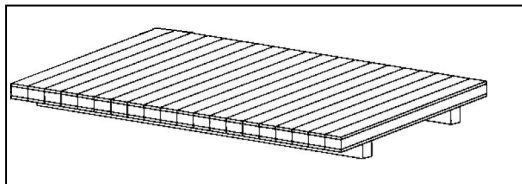
Roofing

Sapiliège® fits on many types of roofing:

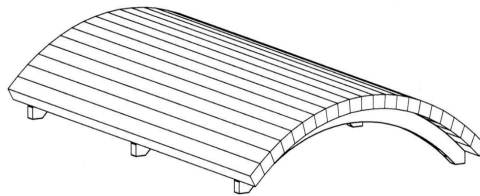
- Straight gable roof



- Minimum sloped roof



- Curved roof



The assets of Sapiliège®

- Acoustic and thermal insulation
- Spruce or oak wood finish
- Optimum spans between bearing elements
- Decay resistant insulation
- Inhospitable to rodents and termites
- Electrically non conductive
- Flame retardant



Sapiliège® SL 136



Technical data Sapiliège®

Models	SL 86	SL 136
Wood + Cork + Wood (in mm)	19+48+19	20+96+20
Usable widths (in mm)	205	205
Weights in kg/m ²	28,4	39,0
R value theoretical (m ² x K/W)	1,38	2,44
Insulation coefficient U (W/m ² x K)	0.65	0.38

* SL 86 = usable length 2.45 linear meters

* SL 136 = all lengths available

Sapiliège® floor and partition

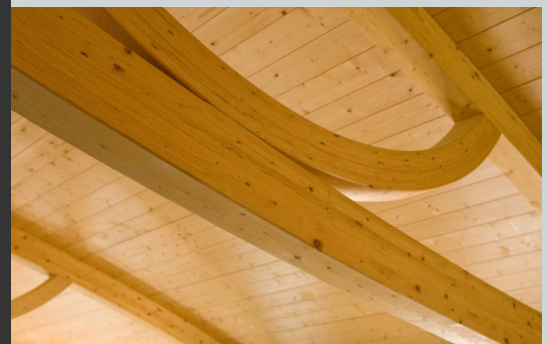
Sapiliège® SL 86 (vertical installations) For interior wall up to 2.45 ml	Compensated linear load	3900 daN/ml
	Compensated load per element	800 daN/unité
	Solid beam reinforcement Compensated load per element	4000 daN/unité
Sapiliège® SL 86 flooring	Loads	≤ 300 daN/m ²
	Span bearing (linear installation)	1,25 ml
	Over hanging	0,40 ml

Sapiliège® roofing

Resting on 3 cross members



Resting on 3 cross members		SL 136
		Acceptable spans in linear meters, up to:
Off setting loads (daN/m ²)	100	4,70
	150	3,80
	200	3,20
	250	2,90
	300	2,60
	350	2,30



Photos Jacquet et Simonin



SIMONIN
Wood Solutions

Rue des Epinottes • 25500 MONTLEBON (MORTEAU) • France
Tel. +33 381 670 126 • Fax +33 381 672 652
export@simonin.com • www.simonin.com