

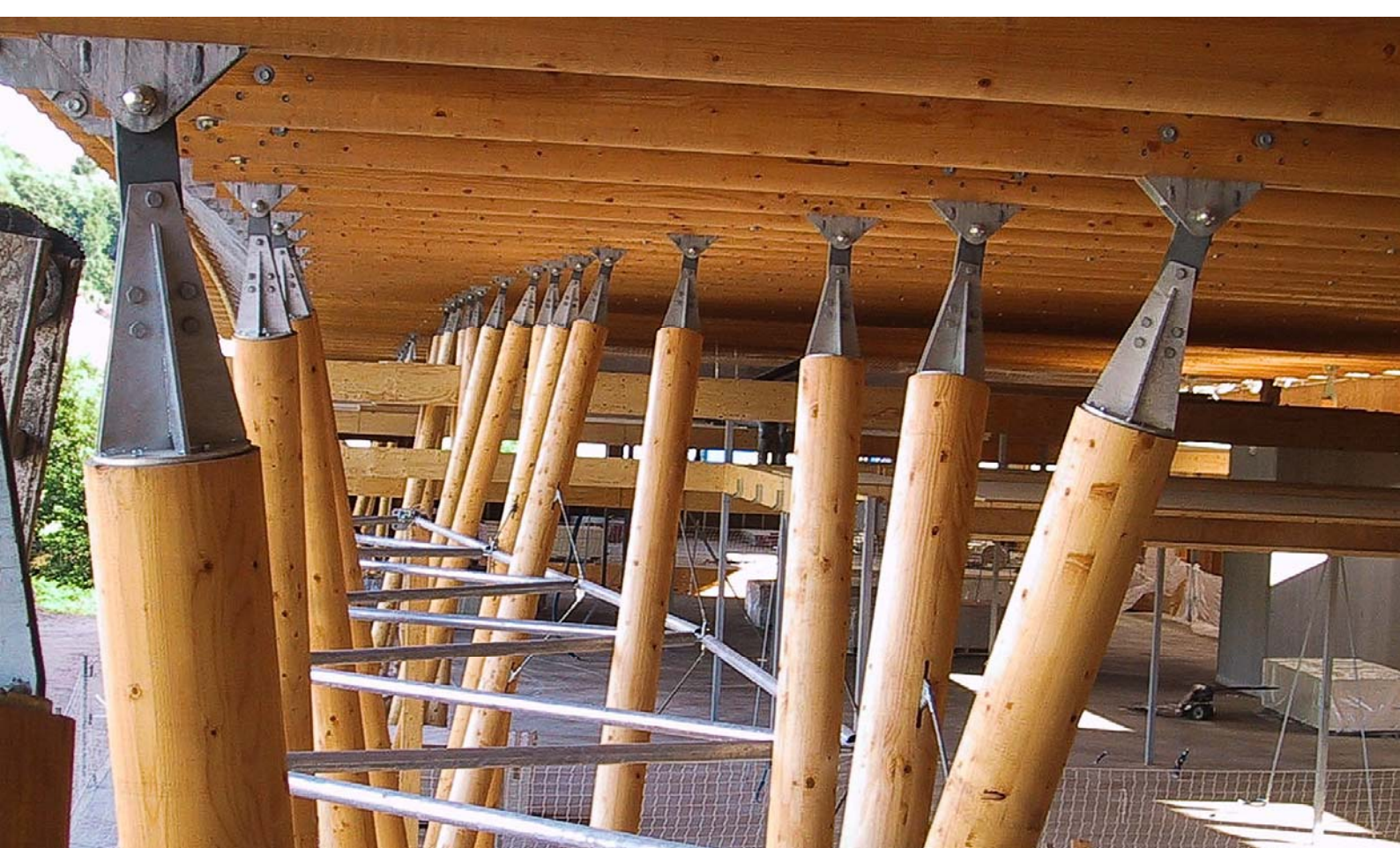
Schools



SIMONIN SAS
22 ZA des Epinottes
25500 MONTLEBON - France



export@simonin.com
Tel. +33 (0)3 81 67 01 26
Fax. +33 (0)3 81 67 26 52





School - Glulam structure in spruce with Résix® assembly - Epinal (France)





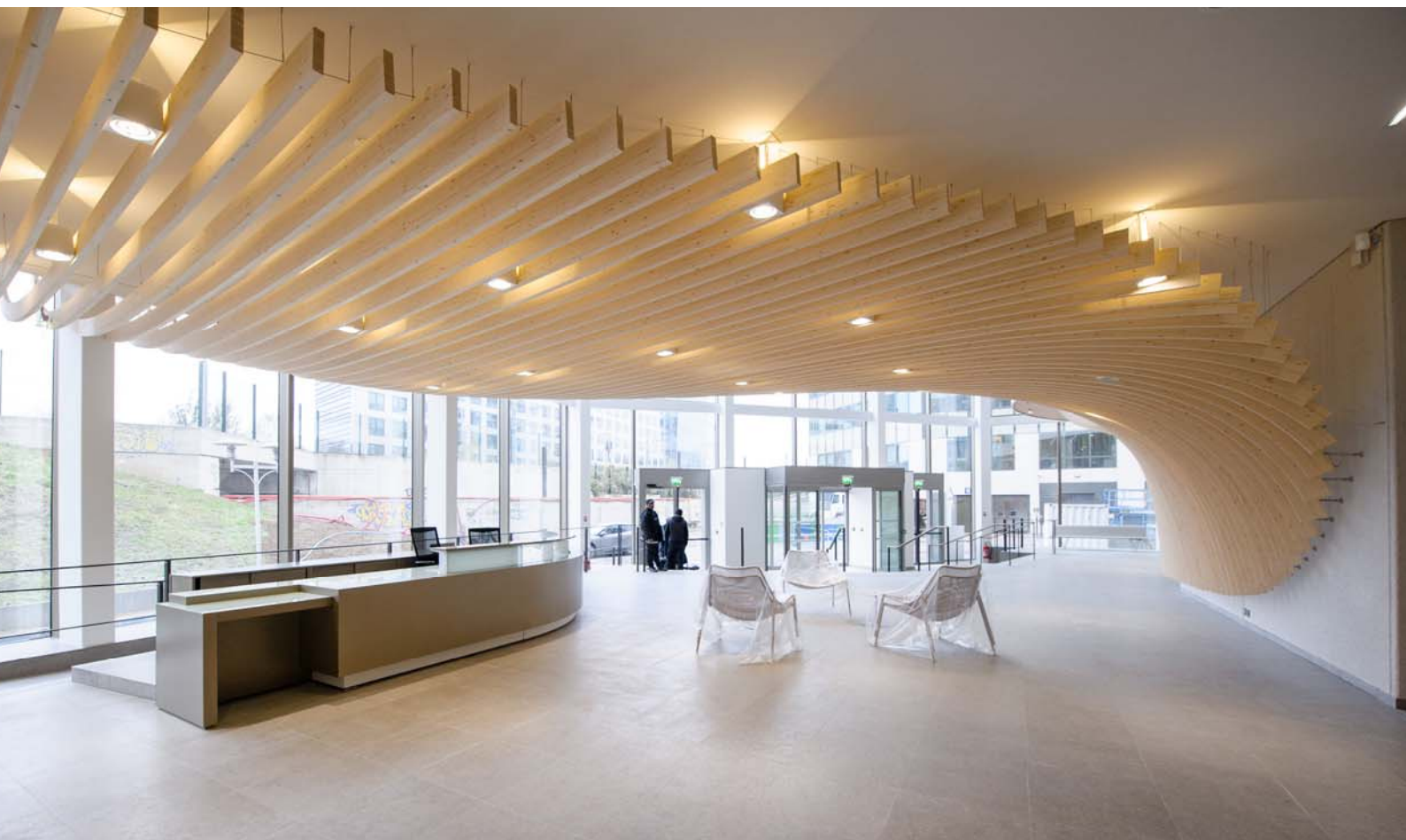
School lawyers - Issy les Moulineaux (France)

Architecture : WILMOTTE & ASSOCIES S.A. / Photos : M. Philippe CLUZEAU



School lawyers - Issy les Moulineaux (France)

Architecture : WILMOTTE & ASSOCIES S.A. / Photos : M. Philippe CLUZEAU



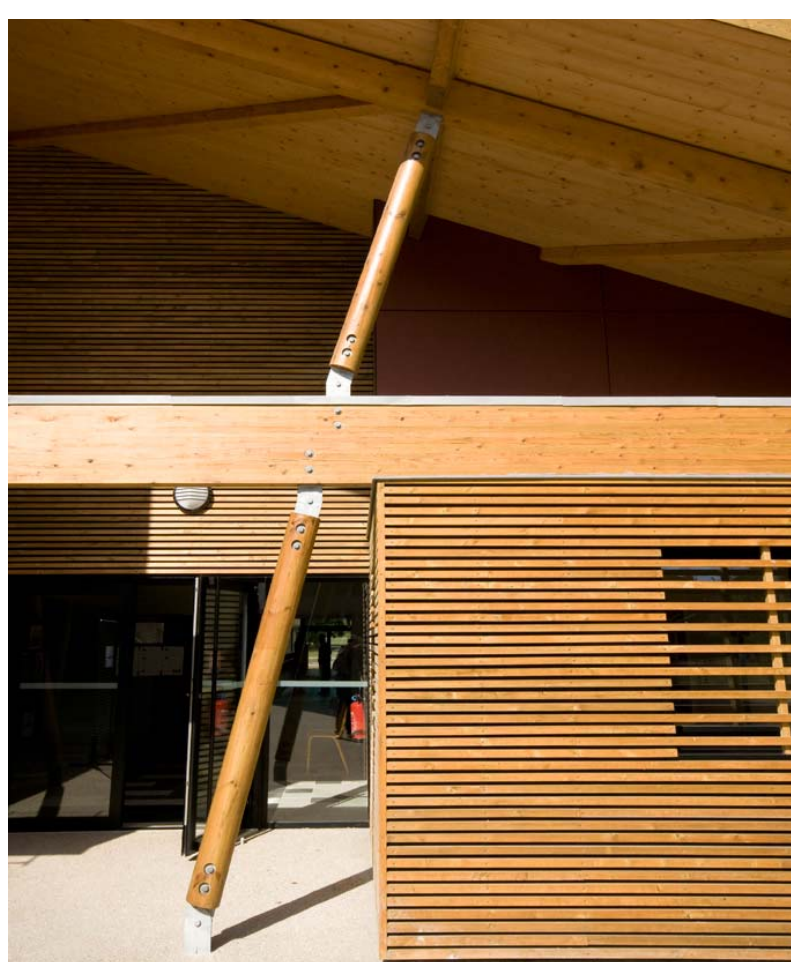
SIMONIN
www.simonin.com



High school - Glulam structure with Résix® assembly - La Réunion (France)



École - Structure bois lamellé collé + Sapisol® - Saint Aubin (33)



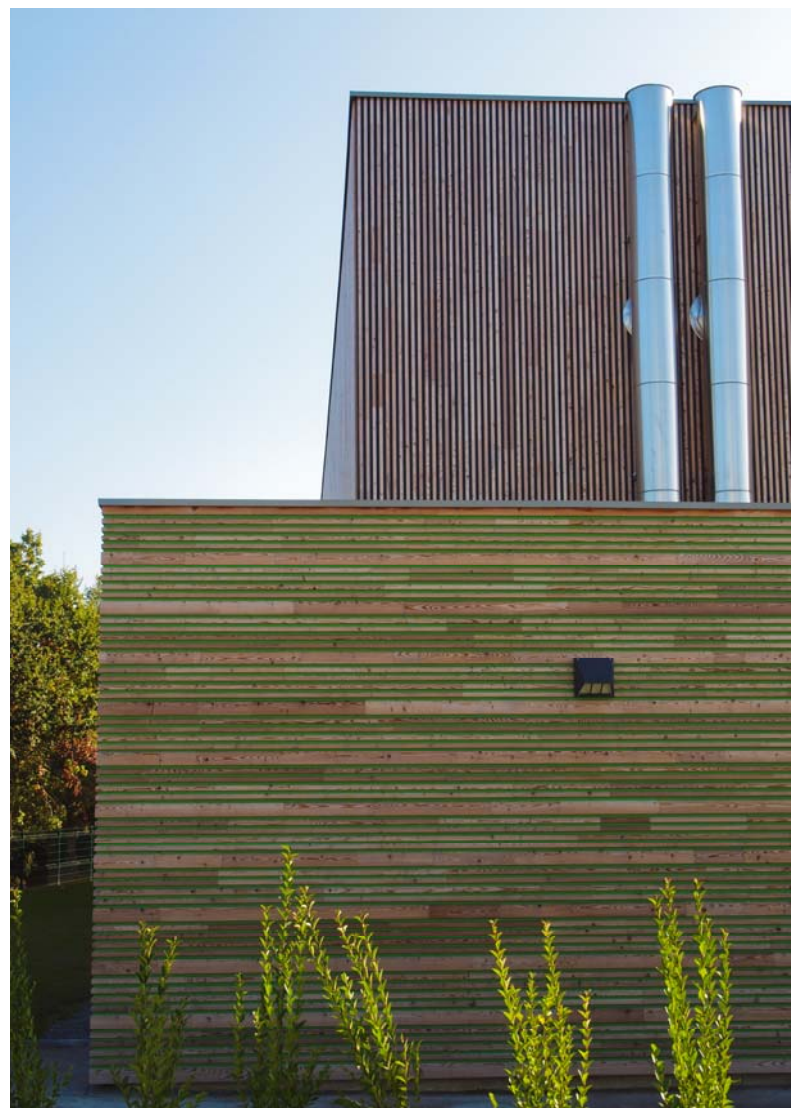


Sport hall - Funlam® cladding in larch - Lyon Confluence (France)



SIMONIN
www.simonin.com

High school - Openlam® cladding in larch - Aubigny (France)



SIMONIN
www.simonin.com

School - Openlam® cladding in larch - Laigneville (France)



Boarding school - Funlam® cladding in spruce - Villebon sur Yvette
(France)



SIMONIN
www.simonin.com

School - Funlam® cladding in larch - Villers sous Erquery (France)





School - Funlam® cladding in spruce - Villeparisis (France)



School - Funlam® cladding in spruce - Monthyon (France)





Covered area - Glulam structure with Résix® assembly - Saint Paul (France)



SIMONIN
www.simonin.com

Covered area - Glulam structure - France



