



*The global solution for
ceilings and interior walls*

The product

- **Complete**

A three in one component constituting 2 outer boards sandwiching an inner plate of water resilient high density particle board.

Sapisin® is delivered in standard lengths of 3,90 meters by 160 mm.

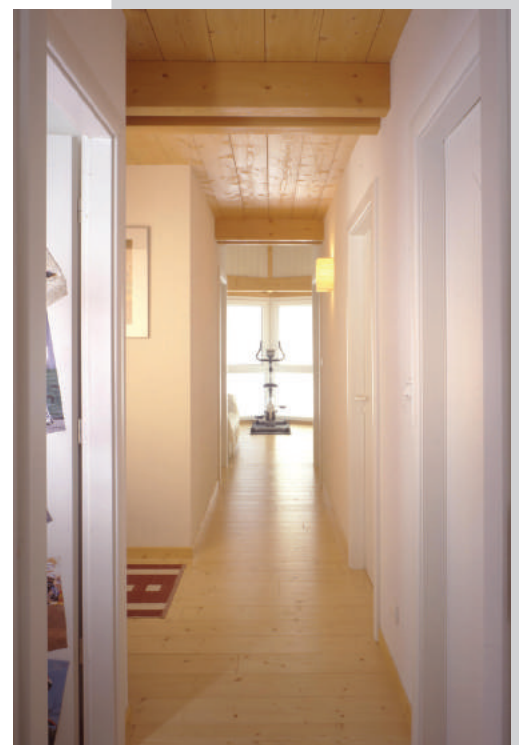
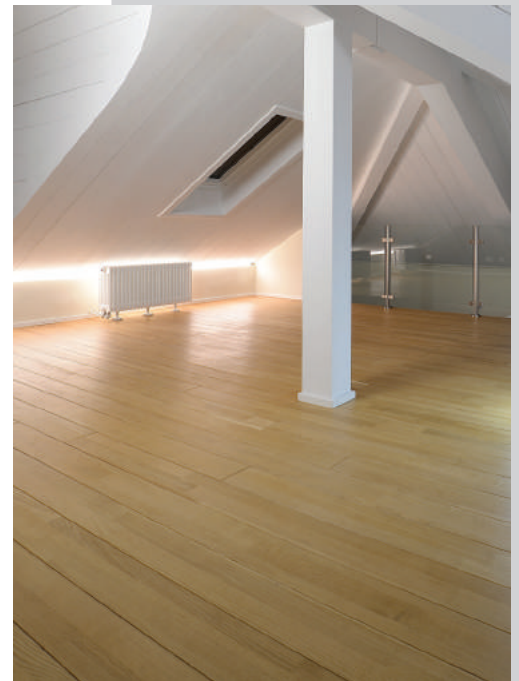
For use in :

- **finished floors/ceilings**
- **finished interior walls**



Sapisin® with one oak face

Grooves for electric cables



- **All around savings**

More economic than traditional rudimentary components Sapisin® allows you :

- **a 2 in 1 : floor and ceiling installation**
- **a high quality finished ceiling**
- **to diminish heavy framework and joisting**
- **to lessen acoustic aggravation by 34 decibels**

- **Refined**

Available with one side in spruce, oak in an array of finishes, Sapisin® provides your floor with genuine character.

Sapisin is well suited and adaptable to classic, contemporary or modern interior design...



Array of finishes

• **Wood species - for floors and ceilings**



Spruce



Oak



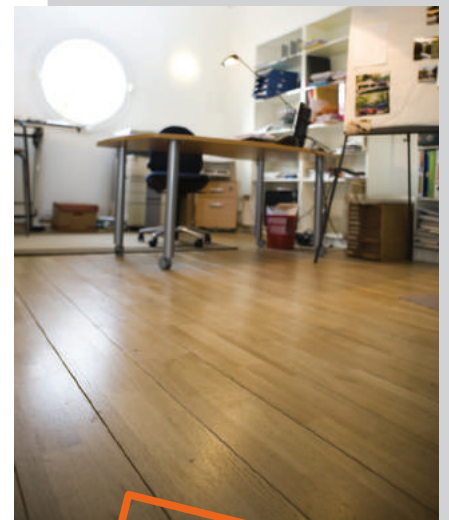
• **Textures - on ceilings (only spruce)**



Sanded

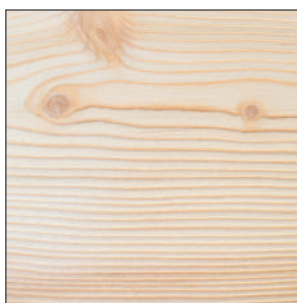


Brushed

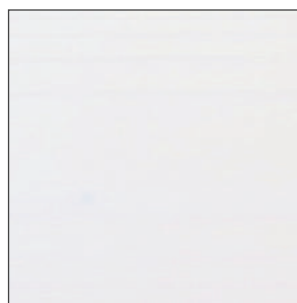


OTHER COLORS ON REQUEST

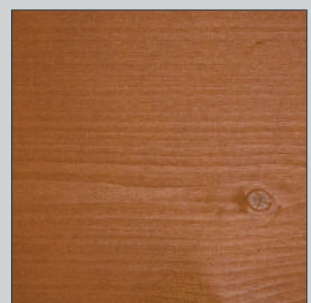
• **Finishes - on sanded or brushed wood finishes for ceilings**



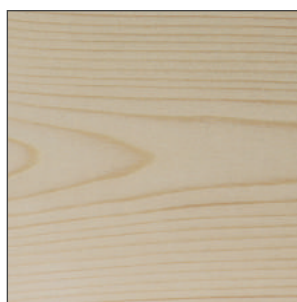
Natural



White



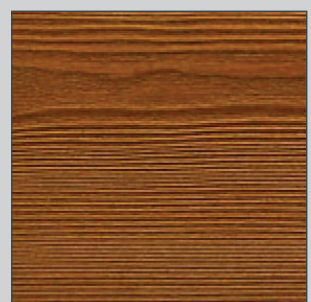
Wild cherry tree



Uncoloured



Old finish



Chestnut

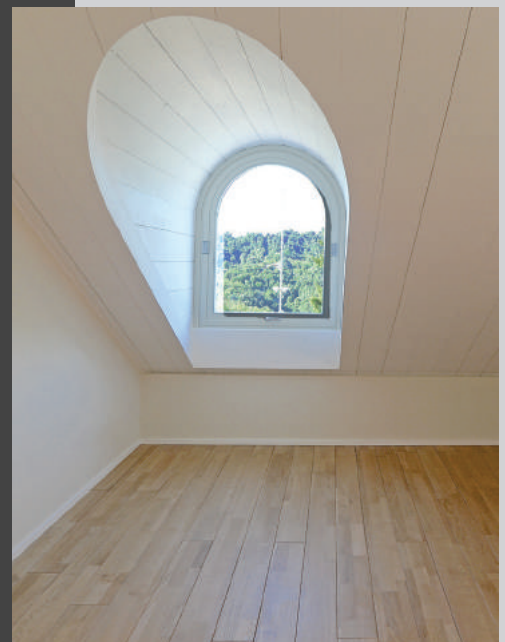
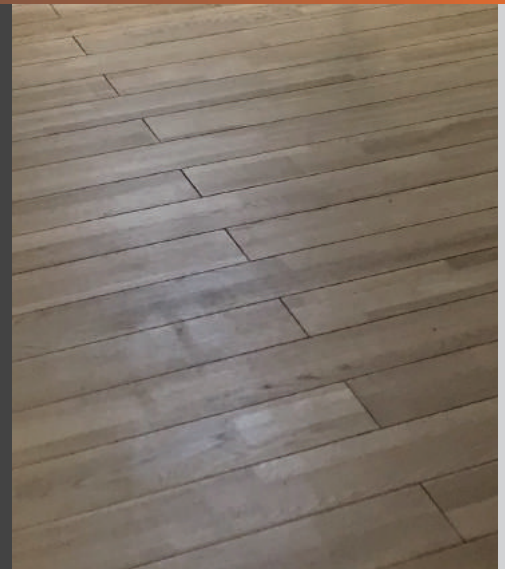
Quick and easy installation

Sapisin® high quality floor and ceiling components machined on four sides to facilitate each and every board fits accurately and seamlessly.

Table loads/staves



| Sapisin | | |
|---|-----------------------|-----------------------|
| Between centers A | 1,80 m | 1,50 m |
| Admissible loads on 3 support elements | 280 kg/m ² | 350 kg/m ² |



SIMONIN
Wood Solutions

22 ZA des Épinottes • 25500 MONTLEBON (MORTEAU) • France
Tel. +33 (0)3 81 67 01 26 • Fax +33 (0)3 81 67 26 52
simonin@simonin.com • www.simonin.com