

Glued Laminated

The Components



High end construction components

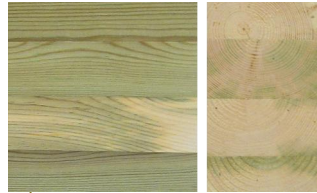
A full spectrum of quality

The Simonin Company uses wood species coming from forests which are managed conforming to Pan European Forest certification (PEFC and FSC standards) and according to your projects requirements.

- The coniferous



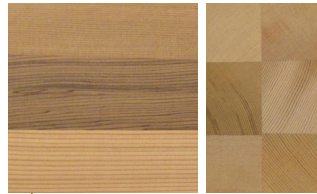
Spruce



Treated pine



Larch without sapwood



Red Cedar (on demand)

- The hard woods



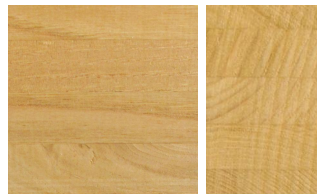
Oak without sapwood



Oak with 15% sapwood



Ash



Chestnut



Beech



Iroko

Spruce



Iroko



Spruce



Larch without sapwood



Larch without sapwood



Larch without sapwood



Ash



Treated pine



Oak with dark finishing



Textures



Sawn



Planed



Brushed



Old finishing

Treatments

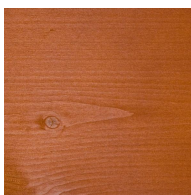
Our line of glued laminated products is treated as follows:

- **Class 1** : insecticidal and blue-stain treatment, water resilient
- **Class 2** : insecticidal, fungicidal and anti-white ant treatment
- **Class 3** : (red pine) pressure treated against insects, fungi and termites (class 4 treatments prior to gluing)

Sapless larch is naturally a class 3 material.

Wood treatment choices should be made according to regional requirements and risk factors.

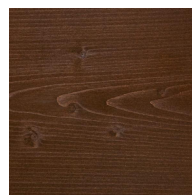
Finishes



Wild cherry tree



Chestnut



Walnut



White



Uncoloured



Natural

Custom stains available upon request.
Not contractual colours.

Iroko



Spruce



Oak



Treated pine with green tinted



Brushed spruce



Larch without sapwood



Larch without sapwood



Spruce (special form)



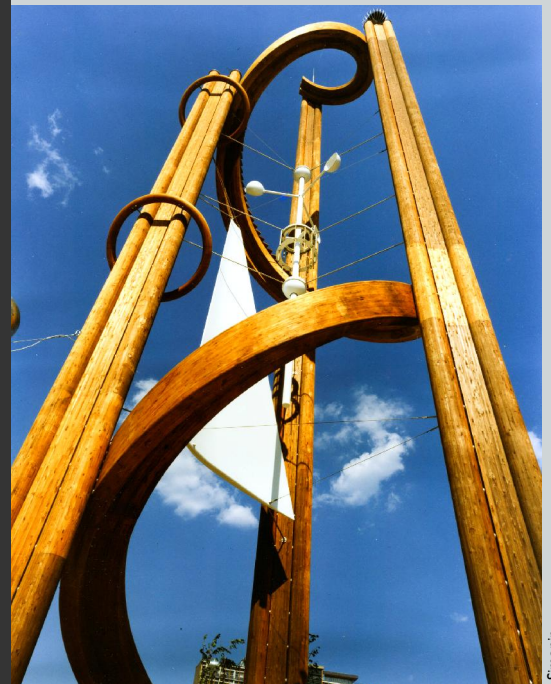
Red Cedar



Our team at your service

In collaboration with all the actors of the industry, for over 40 years the Simonin Company has been offering a line of products and services adapted to your every need.

- Expert calculations
- Customized design
- Respect of aesthetics
 - Budget control
- Computer assisted designs
 - CNC milling
- Résix® invisible connections
 - Laser cut steel fastenings
 - Planning



Photos: Jacquot and Simonin



Rue des Epinottes • 25500 MONTLEBON (MORTEAU) • France
Tel. +33 381 670 126 • Fax +33 381 672 652
export@simonin.com • www.simonin.com